



Reconnecting to the Biosphere

Carl Folke
Stockholm Resilience Centre
Beijer Institute



A biosphere shaped by humanity



Anthropocene

scale, speed, connectivity



The Economist

MAY 28TH - JUNE 3RD 2011

Economist.com

- Obama, Bibi and peace
- Huntsman blows his horn
- A soft landing for China
- The costly war on cancer
- How the brain drain reduces poverty

Welcome to the Anthropocene



“Humans have changed the way the world works. Now they have to change the way they think about it, too”

Geology's new age

Le Monde MAGAZIN



LES DÉFIS DE L'ANTHROPOCÈNE UNE ÈRE NOUVELLE

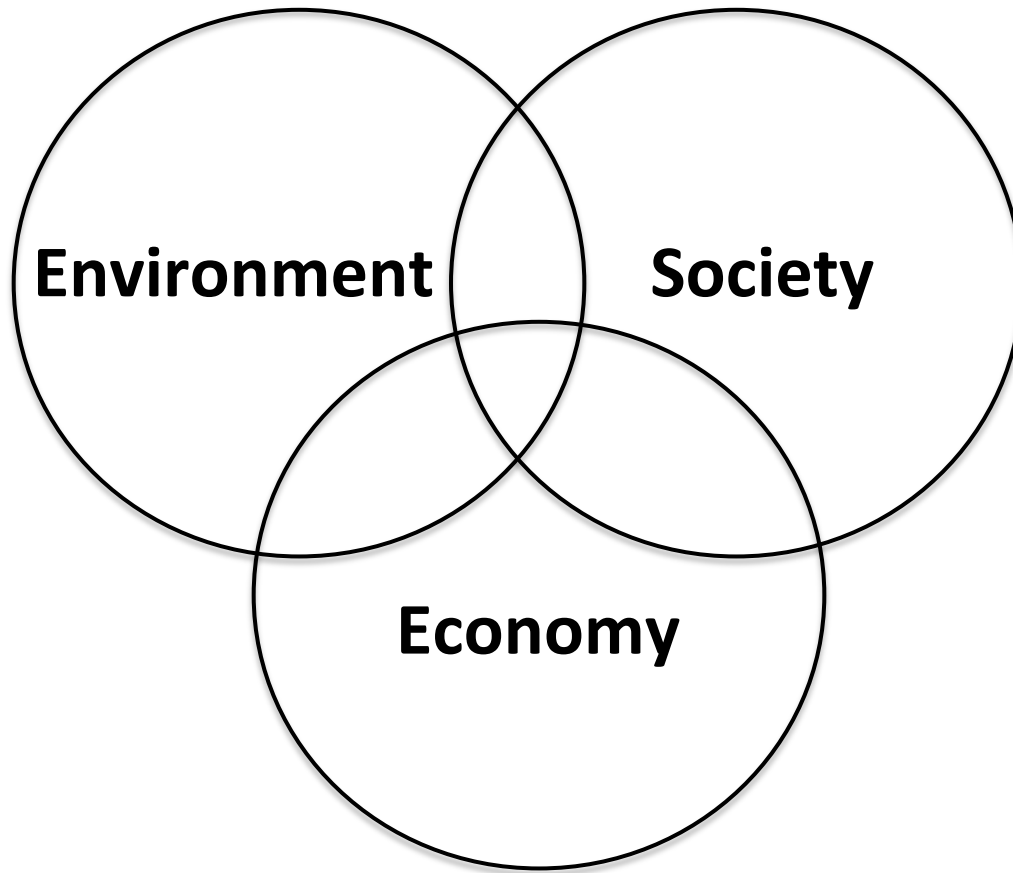
L'HOMME PEUT DÉTRUIRE OU SAUVER LA PLANÈTE

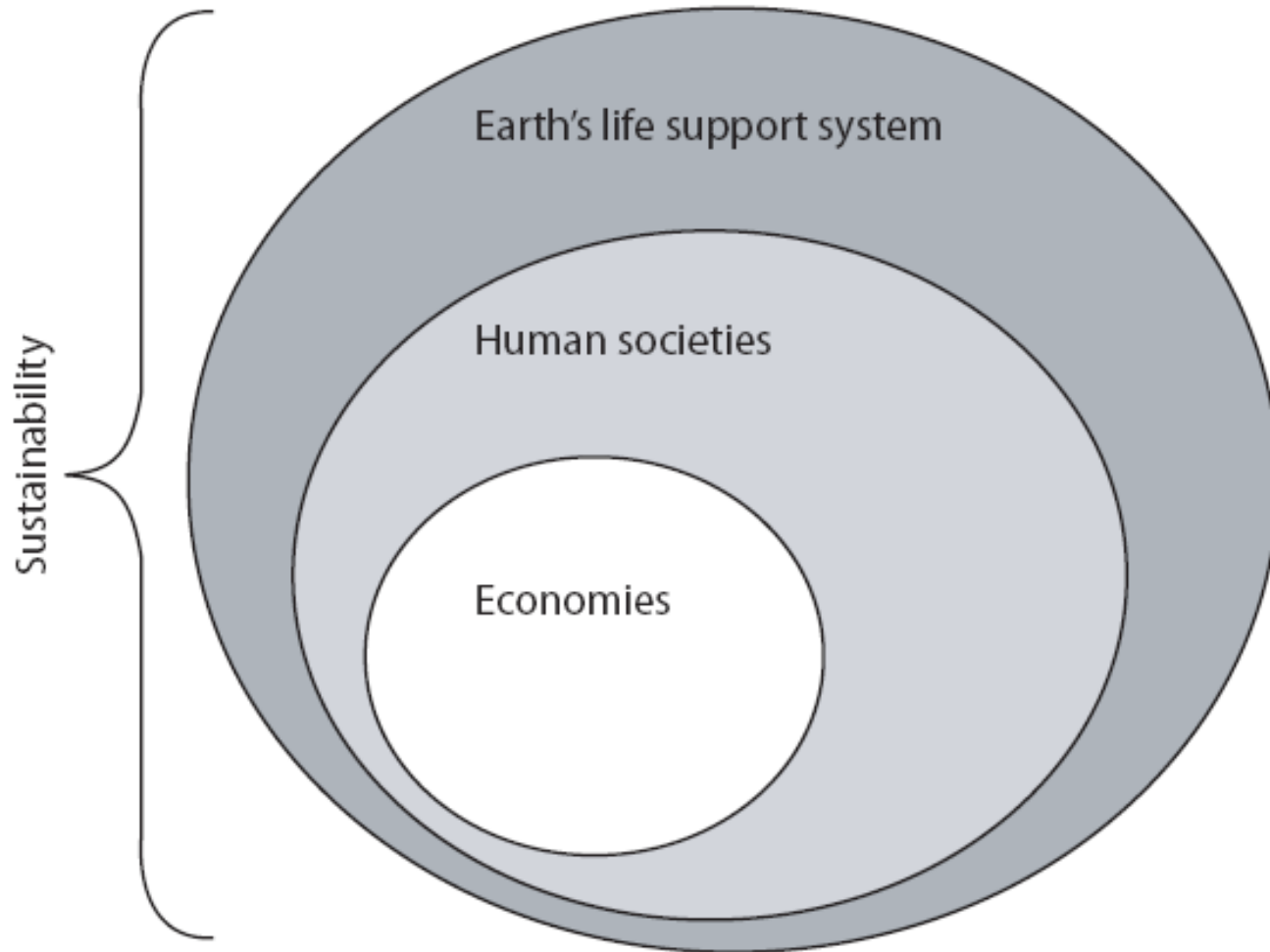
THE ANTHROPOCENE THE AGE OF MAN

...time for a new geologic epoch—one defined by human activity on the planet. That mark will endure in the geologic record long after our cities have crumbled.



Old Sustainability







People are embedded parts of the biosphere and shape it, from local to global scales, from the past to the future

At the same time - people are fundamentally dependent on the capacity of the biosphere to sustain human development

SRC- Collaborative learning platform

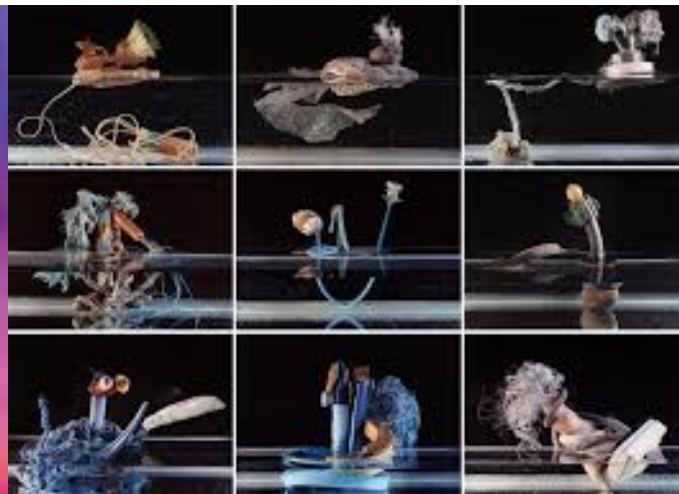
- Diverse perspectives and knowledges interacting with same overall vision
- Carefully facilitated platforms – workshops, dialogues, exhibitions
- Teams, collaborative work, creative atmosphere, stimulate selforganization
- Room for experiments, create safe space, for the unexpected, learn
- Balance efficiency and creativity; stimulate creativity e.g. art and science

The ArtScience space at SRC

- part of the SRC culture since the beginning.
- plays an important role in the trans-disciplinary research and learning process.
- helps explore new concepts, patterns and diverse realities.
- arena for communication, collaborate learning, and discoveries.

Changing Matters

– The Resilience Art Exhibition



Changing Matters – The Resilience Art Exhibition

Threshold - tipping point

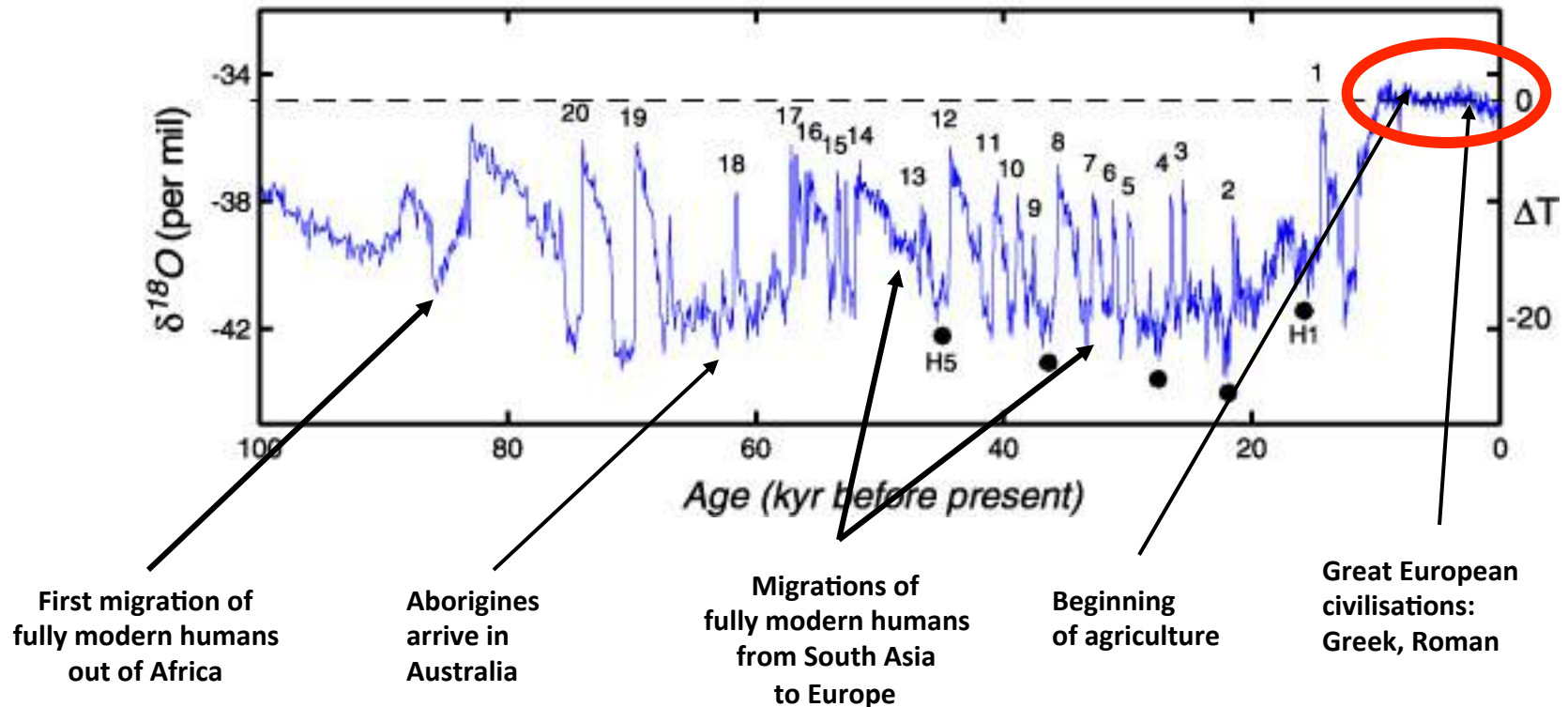


Paul Matosic – Defining moments



Tipping points --
the opportunity of the world

Last Glacial-Interglacial Cycle



Young and Steffen. 2009. In: Chapin et al. (eds.).
Principles of Ecosystem Stewardship. Springer

A SAFE AND JUST TRANSITION FOR ALL

prosperity within planetary boundaries



Nobel Laureate Symposium on Global Sustainability







Reflections

on People and the Biosphere

Carl Folke & Lars Hall

Spaces to breathe

I saw red and yellow flowers amidst snow. The snow, the brightest white ever to have touched my eyes. And through it all, I stood and stumbled, treaded through my thoughts and fears. Through it all, I looked and looked, but to the past's dream. I sought the voices of justice and to let it be done. And then voices they'll still give me, a chance to breathe again, a chance for a fresh start, an space between the happiness and the hardship, an space between the happiness and the hardship.

See forward





































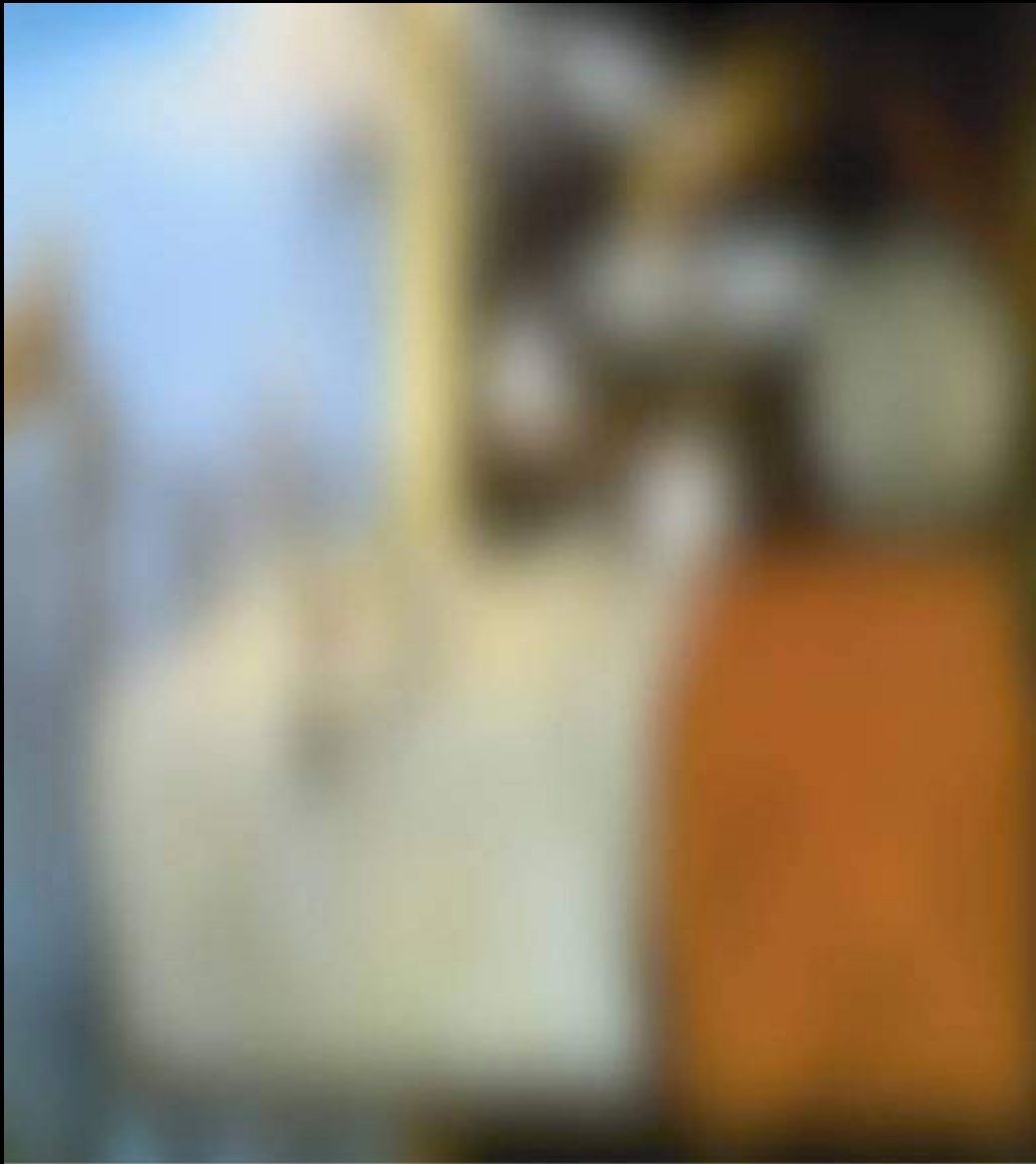


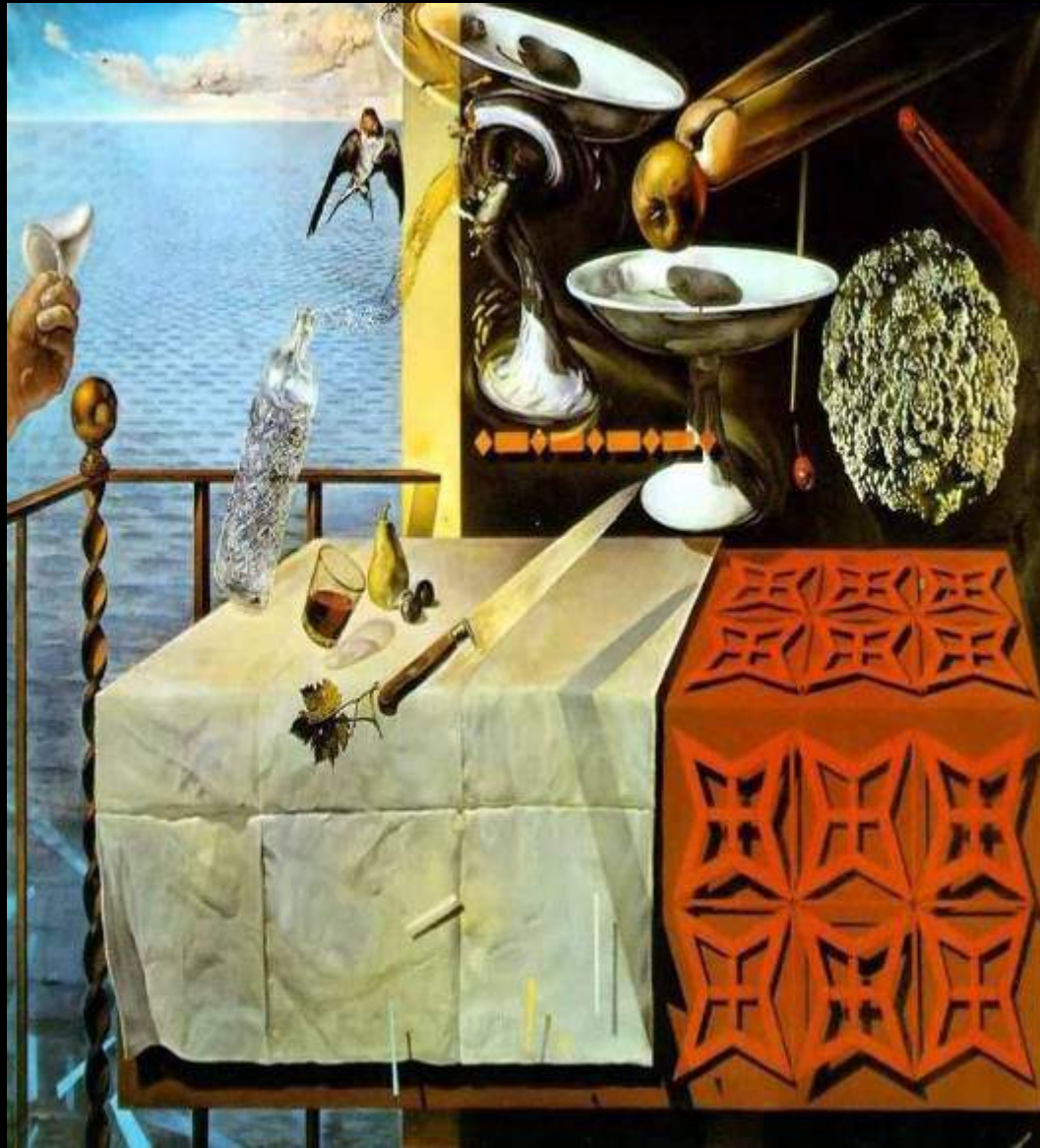




THANK YOU







The Resilience Lens provides new, often surprising insights

- Nobel Laureate meeting on Global Sustainability, poetry, concert
- collaborate with Kungl. Dramaten (Royal Theatre)
- Enriched stories
- Baltic Sea Theatre, and dance group collaboration.

- **ArtScience on all levels of our work - examples**
-
- Placebased and basic research
ArtSciencePub Madagascar and Kenya model
- Developing key narratives
Storry telling workshop
- Introducing newcomers
MRstudents Exhibition
- Meeting culture
SRC 5 years, Theme leader meeting, Askö
- Ambassador artists
Jayson
- Scientific conference
The Resilience conference 2008
- Transition Pilot partners
Coral guardians
- Events for policy, business and change makers
3rd Nobel Laureate Symposium 2011
- Public interaction
Manna live, Art exhibit, Tipping Point
- Web and “send out” science communication
Antropocene video, HQ

Why, what, how?

- **Stockholm Resilience Centre (SU)**,
(www.stockholmresilience.su.se)
- **The Beijer Institute of Ecological Economics, (KVA)** (www.beijer.kva.se)
- **The Resilience Alliance**
(www.resalliance.org)

Some features

- Problem-oriented focus, joint overall vision
- International collaboration, networks, visitors
- International research frontier, evaluation by the international research community
- The stars of tomorrow, careful recruitment
- From basic to applied research, training
- Science-practice-policy, communication